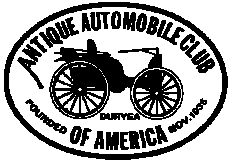


Published Monthly in the Interest of the Preservation of Antique Automobiles

THE RUNNING BOARD

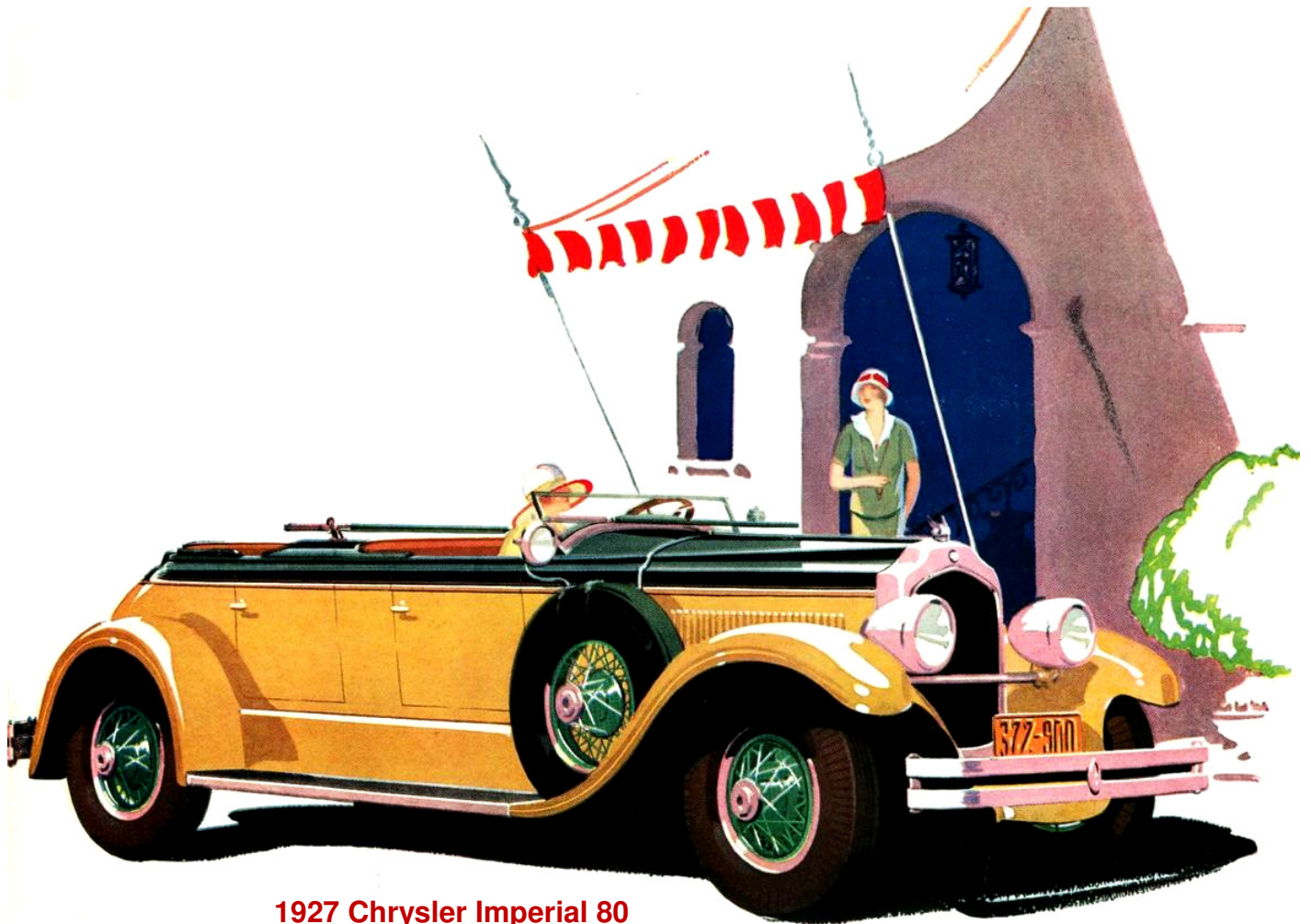


Florida Region Antique Automobile Club of America

Volume XXXV

Award Winning Publication

July 2011, #7



1927 Chrysler Imperial 80

Coming Events

- July 10 Florida Region 2nd Sunday Breakfast, Bahia Shrine, 2300 Pembroke Drive,
Between Keller St. & Forrest City Rd., 9:00 AM
- July 11 Florida Region Board Meeting, Kress Memorial Church, Formosa Ave., Winter Park 6:00 PM
- July 11 Florida Region General Meeting, Kress Memorial Church, Formosa Ave., Winter Park 7:00 PM



FLORIDA REGION

PRESIDENT

Bob Coolidge 386-736-1016
3860 Bird Dog Lane DeLand, 32724

VICE PRESIDENT

Gene Roy 407-327-0740
81 S. Edgemon Winter Springs, 32708

SECRETARY

Howard Gilkes 407-425-6409
1215 Guernsey St., Orlando, 32804

TREASURER

Marilyn Roy 407-327-0740
81 S. Edgemon Winter Springs, 32708

BOARD OF TRUSTEES

Mark Regnier 321-356-3819
Mickey Bryant 407-889-7806
Bob McMullen 407-889-8969
Tom Holt 407-656-7974
Jerry Eakins 407-880-2697
Dick Gauchat 407-695-4412

MEMBERSHIP CHAIRPERSON

Carole Allen 863-324-4055

HISTORIAN

Howard Gilkes 407-425-6409

RUNNING BOARD EDITOR

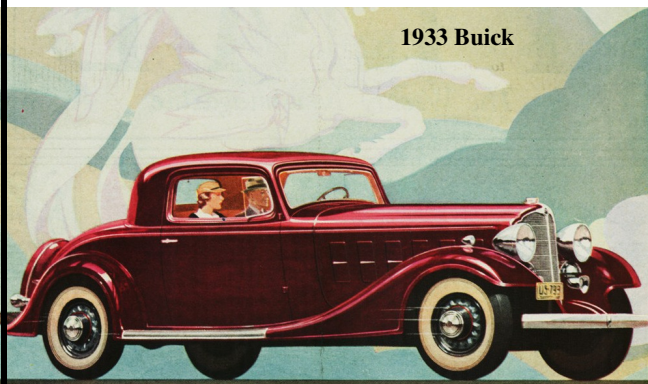
Tim Bucher 407-376-4135
1858 Twin Lake Dr. Gotha, 34734

CLUB WEBSITE: www.aaca.org/florida

WEBMASTERS

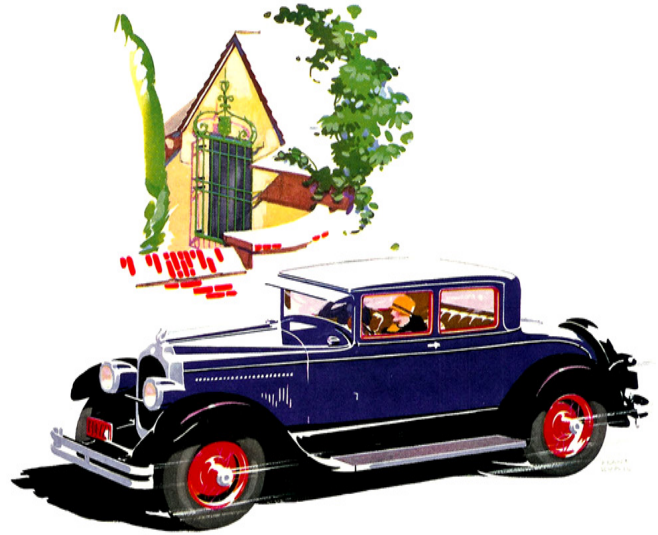
Mickey Bryant 407-889-7806
Mark Regnier 321-356-3819

1933 Buick



Cover Car

This month's cover features the 1927 Chrysler Imperial 80. On June 6, 1925 Maxwell Motors Corp. of which W. P. Chrysler was board chairman, voluntarily transferred its business and physical properties to a new company organized as Chrysler Corporation. By 1927, Chrysler moved up to fourth place in sales with 192,083 deliveries. This year, four different cars bore the Chrysler name; the Chrysler 50, 60, 70, and Imperial 80. Advertisements called attention to the fact that Chrysler cars like the 80 were so-named because of their ability to travel at least 80 mph. The top of the line Imperial 80 came with a 289 cid L-head six cylinder engine rated at 92 hp at 3,200 rpm. The standard wheelbase was 120", but cars were also available on 127" or 133" wheelbases.



80 miles and more an hour with effortless facility; 92 horsepower under control so perfect as to secure instant response to every slightest driving requirement; an ease of riding that makes motoring comfort take on a new meaning—these are the obvious reasons why the Imperial "80" is preferred by connoisseurs and characterized "as fine as money can build". Ten body styles priced from \$2495 to \$3995, f. o. b. Detroit, subject to current Federal excise tax.

Chrysler
Imperial "80"

Happy Birthday

Henry Petronis	July 3	Barbara Parsons	July 18
Lorraine Coolidge	July 5	Larry Gilbreath	July 22
Dan Brennan	July 6	Joanne Swain	July 23
Charlie Steffy	July 8	Bob Stallings	July 25
Tom Holt	July 8	Robert O'Hara	July 27
Betty Bostak	July 9	Mark Regnier	July 28
Marge Eckhart	July 14	Tim Bucher	July 29
Arils Goff	July 14	Judith Hoffman	July 30

President's Letter

By: Bob Coolidge, FL Region President

Finally it looks like we are entering the summer afternoon rainy season. We could do without the damaging winds but hopefully the showers will end the over forty wild fires that are burning here in Volusia County and many other locations.

Due to the sparse turnout this past weekend for our June activity, we will forgo a picnic in July and postpone other activities until September at least. Many of our members are enjoying participating in single mark car club meets over the summer as well as family activities.

Al Adkins introduced Pastor Don Dalton of DeLand last week as our program for the June Meeting. Pastor Dalton proceeded to paint a beautiful landscape right in front of us. All the time he was painting he described his long time interest and involvement in this type of activity. At the completion of the landscape, the painting was donated to the Florida Region and was auctioned off by Darrel Cole. Thank you Dot Clark for the purchase and Darrel for serving as auctioneer. I think that Al Adkins could serve as a great program chair following the two programs he arranged for our monthly meetings.

My trip last month to the American Truck Historical Society national show in South Bend, Indiana went well. Almost 900 trucks were on the show field. This was considered one of the best turnouts for the annual event.

I drove primarily on the old US Highway system. My route took me over US 19, 27, 41, and 31. The return trip utilized mostly the same routes. My trip distance totaled around 2400 miles.

This is the longest distance by far that I have driven my 1960 two ton truck at one time. I have a greater appreciation for the over the road drivers of that era who contended with bumpy roads, stiff riding vehicles, and little or no air conditioning.

There were two instances where climbing long grades required using 3rd gear with a low 20's mph speed.

These were on US 41 going up Monteagle Mountain from Jasper, Tennessee and a long climb on US 421 up from the Ohio River crossing at Madison, Indiana into northern Kentucky. Now to handle the \$1100.00 gas bill for the trip!

Later today, I will be leaving for the Studebaker Drivers Club national meet in Springfield, Missouri. This will be my first time in that part of Missouri and I am looking forward to it. My vehicle for this trip is

a 1949 Studebaker Land Cruiser sedan. It likely will feel like a limo compared to the trip last month in the truck. Approximately 300 vehicles have registered for the meet so I hope it will be a good one.

I was sorry to read last night about Cecil Goff's hospitalization but appreciate Don Allen's emailing the news. I hope that all of our members are gaining on their medical issues. We have become much too supportive of our local health care institutions. However, it is good they are nearby when needed. Let's keep all of our members who are contending with medical situations in our thoughts and prayers for speedy and complete recoveries.

Tom Holt has been in contact with the manager of the Winter Garden Village outdoor shopping complex. There seems to be a high degree of interest by the management there for our holding our Regional vehicle show on their property. More details will be forthcoming in the near future about this. Thank you Tom for your work on this.

I hope that each of you will have safe travels and good health this summer. I will be looking for you at our July meeting.

Best Wishes
Bob

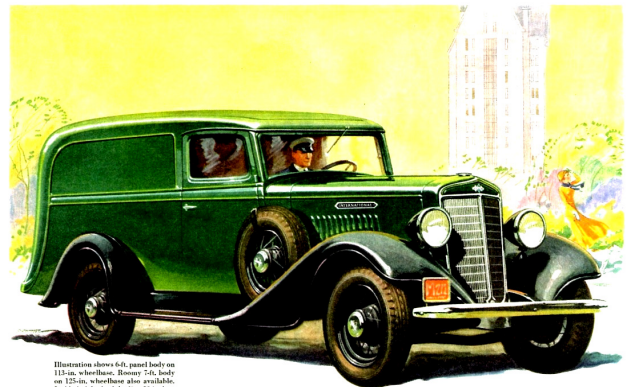


Illustration shows 41, panel body on 113-in. wheelbase. Runny 516 body on 125-in. wheelbase also available. Inside height, both bodies, 52 inches.

INTERNATIONAL HARVESTER
Presents New 1/2-ton Truck

This new Half-Ton International, the Six-Cylinder Model C-1, is a truck of serviceable distinction and beauty, combining new qualities of utility, comfort, performance, and economy. You will find it an outstanding value in the low-price field.

The new Half-Ton International is a fast and sturdy unit that is *all truck*, with chassis and engine built for truck performance, like every International, and styled as you see it above. See and drive this latest product of International truck engineering, now on view at International Branch and Dealer showrooms.

INTERNATIONAL HARVESTER COMPANY
OF AMERICA
606 S. Michigan Ave. Chicago, Illinois



Half-Ton Model C-1 - Brief Specifications
Four-Cylinder, Six-Cylinder, Cummins six-cylinder, 120-hp. 125-hp. 135-hp. 150-hp. 175-hp. 200-hp. 225-hp. 250-hp. 275-hp. 300-hp. 325-hp. 350-hp. 375-hp. 400-hp. 425-hp. 450-hp. 475-hp. 500-hp. 525-hp. 550-hp. 575-hp. 600-hp. 625-hp. 650-hp. 675-hp. 700-hp. 725-hp. 750-hp. 775-hp. 800-hp. 825-hp. 850-hp. 875-hp. 900-hp. 925-hp. 950-hp. 975-hp. 1000-hp. 1025-hp. 1050-hp. 1075-hp. 1100-hp. 1125-hp. 1150-hp. 1175-hp. 1200-hp. 1225-hp. 1250-hp. 1275-hp. 1300-hp. 1325-hp. 1350-hp. 1375-hp. 1400-hp. 1425-hp. 1450-hp. 1475-hp. 1500-hp. 1525-hp. 1550-hp. 1575-hp. 1600-hp. 1625-hp. 1650-hp. 1675-hp. 1700-hp. 1725-hp. 1750-hp. 1775-hp. 1800-hp. 1825-hp. 1850-hp. 1875-hp. 1900-hp. 1925-hp. 1950-hp. 1975-hp. 2000-hp. 2025-hp. 2050-hp. 2075-hp. 2100-hp. 2125-hp. 2150-hp. 2175-hp. 2200-hp. 2225-hp. 2250-hp. 2275-hp. 2300-hp. 2325-hp. 2350-hp. 2375-hp. 2400-hp. 2425-hp. 2450-hp. 2475-hp. 2500-hp. 2525-hp. 2550-hp. 2575-hp. 2600-hp. 2625-hp. 2650-hp. 2675-hp. 2700-hp. 2725-hp. 2750-hp. 2775-hp. 2800-hp. 2825-hp. 2850-hp. 2875-hp. 2900-hp. 2925-hp. 2950-hp. 2975-hp. 3000-hp. 3025-hp. 3050-hp. 3075-hp. 3100-hp. 3125-hp. 3150-hp. 3175-hp. 3200-hp. 3225-hp. 3250-hp. 3275-hp. 3300-hp. 3325-hp. 3350-hp. 3375-hp. 3400-hp. 3425-hp. 3450-hp. 3475-hp. 3500-hp. 3525-hp. 3550-hp. 3575-hp. 3600-hp. 3625-hp. 3650-hp. 3675-hp. 3700-hp. 3725-hp. 3750-hp. 3775-hp. 3800-hp. 3825-hp. 3850-hp. 3875-hp. 3900-hp. 3925-hp. 3950-hp. 3975-hp. 4000-hp. 4025-hp. 4050-hp. 4075-hp. 4100-hp. 4125-hp. 4150-hp. 4175-hp. 4200-hp. 4225-hp. 4250-hp. 4275-hp. 4300-hp. 4325-hp. 4350-hp. 4375-hp. 4400-hp. 4425-hp. 4450-hp. 4475-hp. 4500-hp. 4525-hp. 4550-hp. 4575-hp. 4600-hp. 4625-hp. 4650-hp. 4675-hp. 4700-hp. 4725-hp. 4750-hp. 4775-hp. 4800-hp. 4825-hp. 4850-hp. 4875-hp. 4900-hp. 4925-hp. 4950-hp. 4975-hp. 5000-hp. 5025-hp. 5050-hp. 5075-hp. 5100-hp. 5125-hp. 5150-hp. 5175-hp. 5200-hp. 5225-hp. 5250-hp. 5275-hp. 5300-hp. 5325-hp. 5350-hp. 5375-hp. 5400-hp. 5425-hp. 5450-hp. 5475-hp. 5500-hp. 5525-hp. 5550-hp. 5575-hp. 5600-hp. 5625-hp. 5650-hp. 5675-hp. 5700-hp. 5725-hp. 5750-hp. 5775-hp. 5800-hp. 5825-hp. 5850-hp. 5875-hp. 5900-hp. 5925-hp. 5950-hp. 5975-hp. 6000-hp. 6025-hp. 6050-hp. 6075-hp. 6100-hp. 6125-hp. 6150-hp. 6175-hp. 6200-hp. 6225-hp. 6250-hp. 6275-hp. 6300-hp. 6325-hp. 6350-hp. 6375-hp. 6400-hp. 6425-hp. 6450-hp. 6475-hp. 6500-hp. 6525-hp. 6550-hp. 6575-hp. 6600-hp. 6625-hp. 6650-hp. 6675-hp. 6700-hp. 6725-hp. 6750-hp. 6775-hp. 6800-hp. 6825-hp. 6850-hp. 6875-hp. 6900-hp. 6925-hp. 6950-hp. 6975-hp. 7000-hp. 7025-hp. 7050-hp. 7075-hp. 7100-hp. 7125-hp. 7150-hp. 7175-hp. 7200-hp. 7225-hp. 7250-hp. 7275-hp. 7300-hp. 7325-hp. 7350-hp. 7375-hp. 7400-hp. 7425-hp. 7450-hp. 7475-hp. 7500-hp. 7525-hp. 7550-hp. 7575-hp. 7600-hp. 7625-hp. 7650-hp. 7675-hp. 7700-hp. 7725-hp. 7750-hp. 7775-hp. 7800-hp. 7825-hp. 7850-hp. 7875-hp. 7900-hp. 7925-hp. 7950-hp. 7975-hp. 8000-hp. 8025-hp. 8050-hp. 8075-hp. 8100-hp. 8125-hp. 8150-hp. 8175-hp. 8200-hp. 8225-hp. 8250-hp. 8275-hp. 8300-hp. 8325-hp. 8350-hp. 8375-hp. 8400-hp. 8425-hp. 8450-hp. 8475-hp. 8500-hp. 8525-hp. 8550-hp. 8575-hp. 8600-hp. 8625-hp. 8650-hp. 8675-hp. 8700-hp. 8725-hp. 8750-hp. 8775-hp. 8800-hp. 8825-hp. 8850-hp. 8875-hp. 8900-hp. 8925-hp. 8950-hp. 8975-hp. 9000-hp. 9025-hp. 9050-hp. 9075-hp. 9100-hp. 9125-hp. 9150-hp. 9175-hp. 9200-hp. 9225-hp. 9250-hp. 9275-hp. 9300-hp. 9325-hp. 9350-hp. 9375-hp. 9400-hp. 9425-hp. 9450-hp. 9475-hp. 9500-hp. 9525-hp. 9550-hp. 9575-hp. 9600-hp. 9625-hp. 9650-hp. 9675-hp. 9700-hp. 9725-hp. 9750-hp. 9775-hp. 9800-hp. 9825-hp. 9850-hp. 9875-hp. 9900-hp. 9925-hp. 9950-hp. 9975-hp. 10000-hp.



Sunshine and Tidbits

By: Dena Holt

Cecil Goff was hospitalized on June 14 at Winter Park Hospital due to complications from medication affecting his liver and kidneys . I spoke with Arlis who said he is improving daily and hopefully the worse is behind him and home soon. Our wishes for a speedy recovery and hope to see you out and about very soon.

Our condolences to Shirley and Russ Dawson in the passing of their niece, Ann West, on June 5 in Lafayette, LA. And just six months ago Ann's husband passed away also from cancer. God has joined them together once again for an eternity. Shirley and Russ left on June 14 to attend Ann's memorial service on June 16th. Our thoughts and prayers are with them both.

Jessica Cole had corrective surgery on June 16th and we wish her a speedy recovery. Knowing Jessica, she'll bounce back in no time!

Annette and Ray Morrison attended the Buzzard's Tour in Mt. Airy, NC on June 16 - 19th. Hopefully they enjoyed some cooler weather away from our blistering hot temps these days.

Gary Patterson had a partial left knee replacement in May and coming along nicely with all his therapy. Gary, looking forward to seeing you at our meetings very soon as we all know "you can't keep a good man down for long!"

Patti Ullrich and Bud Gross headed to Mahopac, New York to attend Patti's son Kevin's wedding on July 8th. A happy occasion for a parent as you watch them growing up and now see them embarking into a new life with their loved one by their side. Congratulations to the newlyweds.

Rachel Veitch was back on TV on June 12 featured on the Growing Bold Program which shows lifestyle changes seniors make in retirement; thus they did an update on her recent travels and checking on her "Chariot". The appearances go on and on and keeps life busy and bubbling for Rachel.

Just got word that Al Adkins had emergency surgery for acute appendicitis mid-week of June 12th, what planning as Al attended our club meeting on the 13th with his artist guest for our program and it happened shortly after. He is home and recuperating well even back into his regular routine. As we keep saying, "Good men aren't down for long"! Al, happy to hear all went well and hope to see you and Nellie at our next meeting.

With the summer months upon us news from our members may be scarce so Sunshine & Tidbits might be on the shelf for awhile and back when we have news to pass on. Enjoy the summer.

Happy Birthday to all our July and August members with wishes for many more filled with happy times.

O'Hara Restorations, Inc.

10 S. Scenic Hwy. Frostproof, Florida 33843

863-635-9008 Fax: 863-635-9021

www.ohararestorations.com



Accepting Consignments & Restoration/Mechanical Work

Inventory

1925	Chevy Sedan	19,000
1927	Studebaker Victoria Coupe	18,500
1928	Ford Model A Red	10,500
1929	Ford Model A Green	6,800
1930	Ford Model A Coupe Hot Rod	19,900
1935	Ford 2-Door Conv., W/Carson Top	55,500
1936	Chevy Standard	14,000
1941	Packard Business Coupe	23,500
1941	Cadillac Series 62	44,995
1948	Jeepster	20,000
1948	Studebaker Truck	5,995
1950	Farmall Tractor Red	3,500
1951	Mercury Custom, Red	21,500
1957	Ford Thunderbird Baby Blue	25,000
1960	Ford Galaxie Pending Sale	17,500
1962	Studebaker GT Hawk	15,000
1966	Studebaker Cruiser	5,995
1970	Cadillac	15,000
1977	Rolls Royce Silver Shadow	16,500
1978	Volkswagen Conv. Reduced	10,900
1979	VW Volkswagen	13,000
1983	Mercedes Benz, 380 SL	13,500
1984	Cadillac 2-Door	2,500
1989	Mercedes 560 SL	42,000
1989	Bentley Turbo	42,500
1989	Buick Reatta,	3,500
1993	Chevy Corvette LT1 Purple	8,900
1919	Pollywog Wooden Boat	34,000

New 2011 Royal c-5 500 cc Motorcycles are here!! Get yours today!! Other models and colors available...

Cozy sidecars and Velorex Sidecars available also – We service what we sell!!!

Interested in a car –give us a call or send us an e-mail!!

Ohararestorations@yahoo.com

Florida Region History – July 2011

By Howard Gilkes, Historian

In looking through our January 1978 'Running Board', I ran across this in the editorial.

“ We are very sorry to report the passing of Don Patterson. Don was a charter member of our club ... If your Editor had to select one man he felt most typified all the characteristics we would most like to see our members display, Don was that man.

He was a rare person who possessed talent and never hesitated to share his time and knowledge with others needing help on a car.

He was always an active member, more than willing to help or head a worthwhile project. The children at Harry Anna Home and Boys Ranch can be grateful that Don spear-headed our Annual Bar-B-Que and benefit auction in Mount Dora.

He and Sadie always had the Jordan at shows and parades. I am sure we all will miss and remember Don with love, and our prayers are with Sadie and brother Lee.

I was honored by knowing Don Patterson.”

The Editor was present member Bob Rader who was our club President for 1975 and 1976. Don's brother Lee Patterson was an active member who died several years ago. Lee's son Gary Patterson and wife Nancy are present Florida Region members.

We now know the Patterson family lineage and why we have a 'Don Patterson Award'.

Florida Region Board Meeting Minutes 6-13-2011

The Board of the Florida Region AACA met at the Kress Memorial Church in Winter Park on June 13th, 2011. The meeting was called to order by President Bob Coolidge at 6:00pm. Other Officers and Board Members present were Mickey Bryant, Howard Gilkes, Marilyn Roy, Gene Roy, Dick Gauchat and Tom Holt.

Marilyn Roy gave the Treasurer's Report and it was filed. The final financial report on our Founders Tour will be completed by our July meeting.

The Minutes of the May Board Meeting were approved as published in 'The Running Board'.

Howard advised the Board of our meeting room for July only. It will be the last Bible School Room on the East end, across from the dumpster.

Howard reported that twenty (20) members attended the Goff's pot Luck Luncheon. Everyone seemed to enjoy the gathering and viewing of Cecil's collection of flat-head Fords and more.

Howard also reported on the death of member Joe Bastien.

Bob Coolidge reported on an underwhelming attendance at the Florida Pioneer Village activity, possibly due to the heat. He thought that the attraction is worthy of another cooler date in the future.

Bob also reported on a request from the National Federation of the Blind for an automobile show for the Blind and Visually impaired as well as family members also in attendance. It will take place at the Rosen Shingle Creek, Monday, July 4th, 2011 from Noon to 4:00pm. It was decided to participate on an individual basis rather than a ClubActivity.

Tom Holt recommended Winter Garden Village shopping center for our 2012 Florida Region Auto Show, possibly February 25th or March 3rd. He will confirm by July.

Upcoming tentative monthly activities include the following :

July Too Hot

August Too Hot

Sept. Picnic In The Park / Geneva Historical Museum, Dick Gauchat / Bob Coolidge

October Busy.....Hershey

Nov. Mystery Tour, Mark Regnier

Nov. 19 Villages Region Get Together, 3:00pm-8:00pm Cruise In

Dec. Christmas Party, Dick & Millie Gauchat and helpers

Jan., 2012 DeLeon Springs Pancake Run

The program for July will be 'Shelby Video' or 'Road Tour To Michigan', Mark Regnier

The meeting was adjourned at 6:45pm.

Florida Region General Meeting Minutes 6-13-2011

The General Meeting of the Florida Region AACA was held at the Kress Memorial Church in Winter Park on June 13, 2011. The meeting was called to order by President Bob Coolidge at 7:00pm. Twenty-nine (29) members and guests were in attendance.

The program was "The Artist". Dot Clark had the highest bid for the painting.

Marilyn gave the Treasurer's Report and it was filed.

The Minutes of the May General Meeting were approved as published in 'The Running Board'.

Kendra Gilkes gave the Sunshine Report.

Bob Coolidge reported an underwhelming attendance for our Florida Pioneer Village event.

It was decided to postpone our Picnic In The Park on Lake Harney in Geneva, and our following visit to the Geneva Historical Museum.

Bob advised the Membership of the church room to be used for our July meetings due to Summer Bible School.

Bob advised the Membership of a request from the National Federation of the Blind National Convention for an automobile show on Monday, July 4th, 2011, from Noon to 4:00pm, at the Rosen Shingle Creek. It was decided to participate on an individual basis.

Bob reported on his trip to South Bend, Indiana driving his 1960 Studebaker 2-Ton Truck. The occasion was the National Convention of the Historical Truck Society.

Tom reported on the Downtown Orlando Car Show, Church Street to new Arena, 1st Saturday every month, gift card awards, 85 vehicles, \$6 Registration.

Bob has \$20 National Raffle Tickets; win a Plym. Prowler, Harley Davidson M/C, \$3000.

The 50/50 raffle was won by Tom Holt. Silver Dollar winners were Bill Morris, Dot Clark and Al Adkins. The coffee/creamer/sugar gift package was won by John Downing.

The meeting was adjourned at 8:15pm.

Howard Gilkes, Secretary

Does your Club Have a Motivation Problem?

By: Wayne Burgess, VP Development & Support, Southeast Division, From: *The Rummage Box*

It's really interesting what you hear when you listen, really listen to people. I struck up a conversation with a Florida gentleman at the Homestead Meet. He was a really nice fellow, but he was distressed that his club members were getting older and were having trouble getting motivated. I'm sure most of you have heard this story before, the graying of the AACA. What a lot of members do not know is that there are some AACA regions and chapters that have corrected this problem. They have taken control of the situation, as some would say, and turned this phenomenon around.

I learned of this at Homestead when an Ohio friend of mine came up to me and my new Florida friend and explained that the Ohio region reaches out to its chapters and invites all chapters to attend the numerous activities put on by the region each year. These activities rotate throughout the state so that everyone shares the travel time somewhat equally. The Louisiana Region does the same thing.

As my Florida friend listened to the Ohio solution, he explained to me that their region recently had a small tour in a nearby town that was attended by another nearby AACA region on the same day and neither of them knew the other was going to be there. Wow! Communication, guys!

Now, a challenge to each of you:

Start sharing those newsletters

Keep in touch with AACA regions in your area, even if they are 50-100+ miles away.

Invite those other regions and chapters to attend your activities, especially your annual meet.

Most important, do attend the other regional and chapter activities held by other regions.

You may be surprised at the energy your own members get from sharing with new people, who will soon become new friends to you and your AACA region and chapter. A very important result of this sharing with other regions and chapters is that your smaller club may now have the "hands on deck" to handle an AACA National Meet or Tour. Now, that is something we all want. You can not imagine how much stronger your club can become when you host an AACA national activity. I'll let our AACA Vice President of Activities, Don Barlup, explain that to you some time in the future.

The HPOF Buzz! What Is It?

By: Hulon C. McCraw
Chairman Special HPOF Review Committee
From: *The Rummage Box*

Before getting into serious details, you first must know the history and intent of embarking on the introduction of the Historic Preservation of Original Features class. Former Presidents, Al Edmond (1987) Tom Reese Chairman, Lloyd Riggs and Stanley "Doc" Stratton were the pioneers establishing the Original non-restored class we know today as the HPOF class. The vehicles in this class represent the evolution of automobile history and depict originality over restoration. A cornerstone belief of AACA is based upon originality, and this class allows us to see history as it was. Al and the committee's belief was that these original vehicles should be the premiere attraction at AACA events. Little did they know that they were putting AACA in the forefront as the leader in the hobby to recognize original vehicles. The premiere showing of original vehicles kicked off the 1988 season at the Winter Meet in Ft. Lauderdale, FL.

As time goes by and the reins are passed from one to another over the years, we find that emphases placed years ago have relaxed and even slipped somewhat, shame on us. However, knowing our past and recognizing our lack of attention in this area, Terry Bond, former President (2010) and current President Joe Gagliano (2011) have appointed a special HPOF committee to re-assess our current position, marketing strategy, strategic plan and evaluation of the HPOF class.

The committee has been challenged to re-establish the stature and prominence of our Historic Preservation of Original Features (HPOF) Class as originally intended upon inception. These vehicles are non-restored and therefore the base by which we learn about and preserve the history of the automobile. To accomplish this, HPOF owners were asked to participate in a survey at the end of 2010. The response was overwhelming, two-thirds of you responded with your thoughts, comments and critique of HPOF currently. Thank you for your participation it was overwhelming. Now we have some bases and direction for rejuvenating the stature and prominence originally intended for the HPOF class.

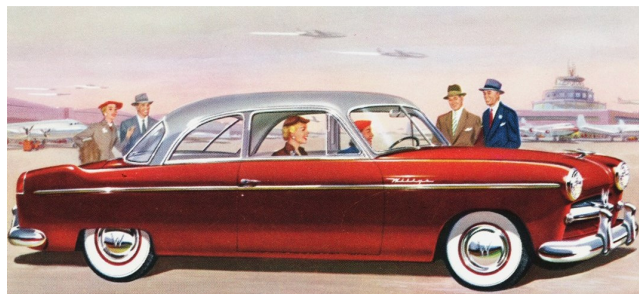
Looking at our current position, vehicles 35 years or older are accepted for pre-registration into the HPOF Class. The day of the meet these vehicles are displayed together, in date of manufacture order (introduced last year) and generally in the back of the show field. The class has it's own trained evaluation team; it's own

evaluation form and National Awards. If the vehicle is evaluated to be original it wins the HPOF Certification Award. The awards received by the owners are typically read at the end of the Saturday night awards banquet. This year beginning in Homestead, FL at the Winter Meet continuing thru Charlotte, NC at the Southeastern Spring Meet, with the cooperation of the hosting regions, the special HPOF committee has proposed the following:

- Continue displaying together (first time certification) in date of manufacture order and (repeat certification) in date of manufacture order.
- Display HPOF class in a prominent place on the show field to garner the attention of the spectators.
- HPOF vehicle awards to be read with the like vehicle class at the Saturday night awards banquet. Signs defining the HPOF class to members as well as spectators who may become potential members.

The above practices are temporary trial pilots ONLY at this time, for the purpose to gather member and spectator response. The committee recognizes that change attracts some normal resistance. We only ask that you give us your honest feed back just as you did in the survey. With your help we can keep AACA as the premiere leader recognizing original vehicles while gaining the stature and prominence originally intended for our HPOF class.

	<p>MIAMI 3950 N. Miami Ave. (305) 576-1640 (800) 887-8466</p>
	<p>TAMPA 222 N. 12th St. (813) 223-7554 (800) 886-5945</p>
<p>CHICAGO 3601 W. 53rd St. (773) 884-2182 (877) 372-4073</p>	
<p>amazon HOSE & RUBBER COMPANY</p>	
<p>Gale Petronis President</p> <p>1625 W. Princeton Street Orlando, Florida 32804 (407) 843-8190 (800) 340-0229 (407) 999-7760 Home (407) 376-4155 Cell (407) 422-5577 Fax</p>	
<p>www.amazonhose.com</p>	



Chief Judge-Behind the Scenes

By: Brenda Shore Kaiser, VP Judging Administration
From: The Rummage Box

Congratulations! You have been selected to be a Chief Judge at a National Meet. You have been honored by being selected but there is a part of you that does wonder what you have gotten yourself into with this responsibility. There are three major, identified positions when it comes to hosting a National Meet: Meet Chairman, Registration Chairman and Chief Judge. All of these positions are extremely important; for purposes of this article we will focus on the Chief Judge.

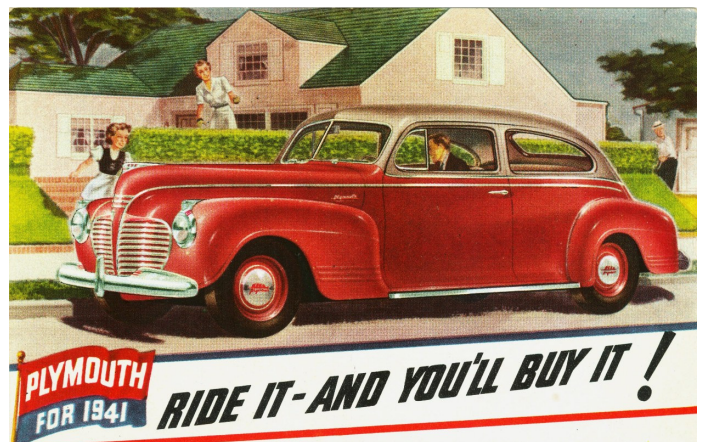
The Chief Judge of a National Meet has a lot of work to do but you cannot discount two things – you will get to meet a lot of AACA members and you have an extraordinary amount of support from National HQ and the Board. There is so much to be gained by your success as a Chief Judge and it is never more evident than when you read the names of all of the award winners at the Meet's banquet. You have been an important part of a member's life and memory. So what does a Chief Judge do once they are assigned? It is easy to provide a list of the tasks that must be completed; the extent to which they are important and the time it takes for them to be completed depends on the size of your meet:

- * Work with Meet Chairman and Registration Chairperson to determine entry dates, schedules and activity locations – specifically the location of the Meet field.
- * Identify the location of the Judge's breakfast, set the menu and work the contract. Ensure that you are within budget and that access to the site if available.
- * Coordinate the registration of all judges; work with HQ to become familiar with and use the Meet Program.
- * Double check that all cars registered are classified correctly.
- * Build judging teams.
- * Communicate with everyone that calls, writes, sends a text and an email.
- * Other duties as assigned, and recognize that the day of the meet will be a very long day!

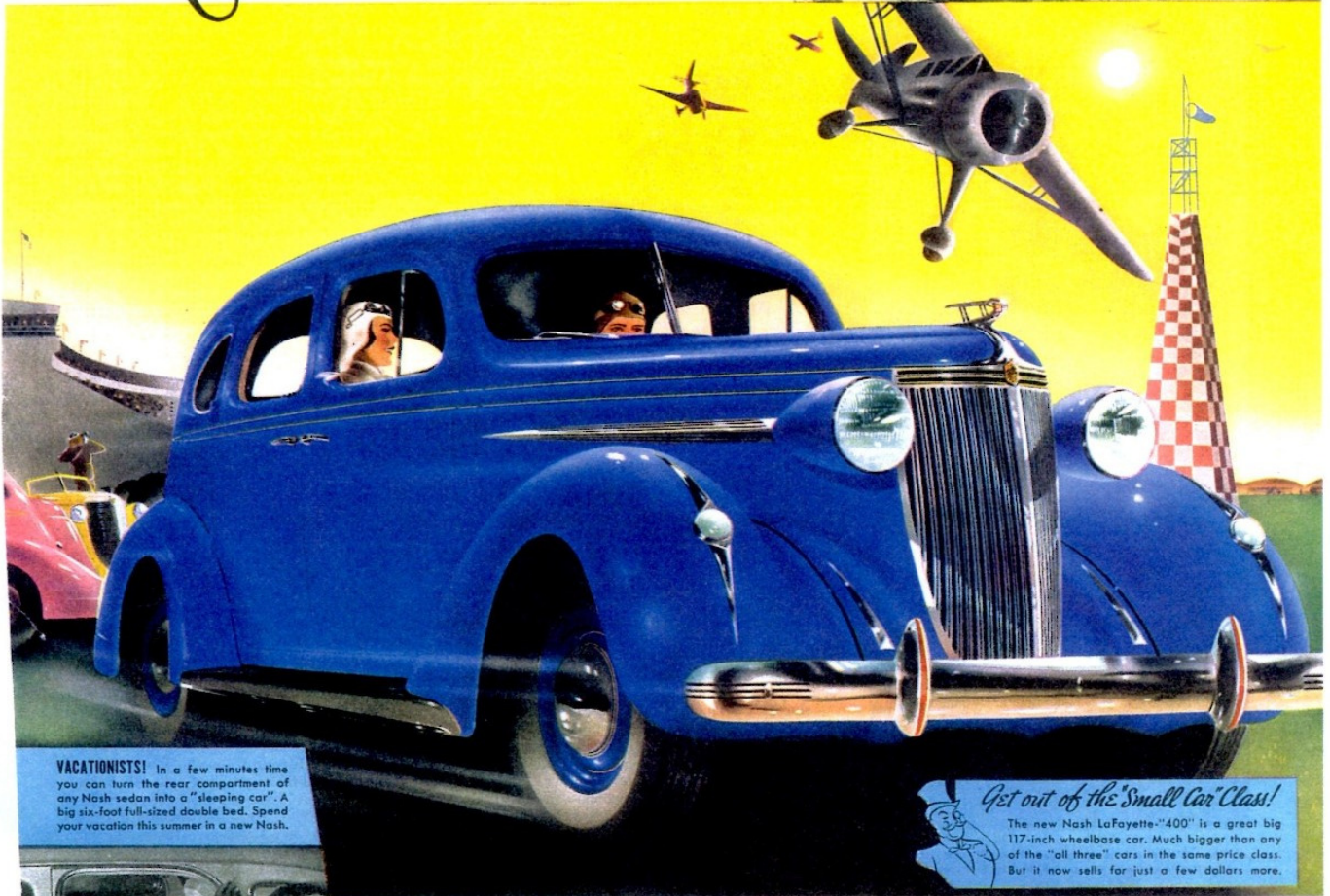
Does all of this sound easy? Remember that with all of this planning and organizing you will receive about eight notices from HQ and the Board – who does what, when, how, and sometimes even why. You will receive the Certified Captain list, the judges eligible for HPOF, DPC and SGCV. By the way, the VP Judging Administration has a few things that are needed and then there is Judging School and CJE's. This certainly seems like a lot of items that must be covered, managed and workable in a two day time period. You will do a great job!

Congratulations! You have been selected to be a Chief Judge at a National Meet (this can't be said enough). You will not only do an excellent job but you will be surrounded by a group of individuals who are passionate and care about your success. These individuals include representatives of our headquarter office, our Board and our Chairpersons; it includes men and women who will be there when you wake up and when you go to sleep. They will attend your meet – celebrating your success and ensuring that there is no alternative.

If you have an interest in joining the ranks of the many great past Chief Judges contact the VP of Class Judging or the VP of Activities. Either of these Directors can give you much more information and will be happy to speak with you. Join us in making someone happy! Be a part of making memories. Be a Chief Judge for a National AACA meet. You may be tired when it is over, you may even be somewhat overwhelmed by all of what is required but I guarantee you one thing – you will make a difference and you will probably volunteer to do it again real soon; we will let you get some rest in the meantime. Thank you to all of you who have been a Chief Judge. We can't do it without you! And the rest of you – sign up soon – we need you!



Blue Blood for Red Blooded People



VACATIONISTS! In a few minutes time you can turn the rear compartment of any Nash sedan into a "sleeping car". A big six-foot full-sized double bed. Spend your vacation this summer in a new Nash.

Get out of the "Small Car" Class!

The new Nash LaFayette-"400" is a great big 117-inch wheelbase car. Much bigger than any of the "all three" cars in the same price class. But it now sells for just a few dollars more.

From actual photograph of Nash Ambassador Six 4-Door Sedan with trunk

In big cities and small towns all over the country . . . thousands of wide-awake people are stepping out in luxurious big Nash cars this year

If you long for luxury . . . if you like to step out in style . . . if you've got that red-blooded drive inside you to treat *your* family to the finest . . . then Nash was made for you.

For here are true "Blue Bloods" among motor cars, made in the finest Nash tradition, priced unbelievably low.

The new Nash LaFayette-"400" is a great big six cylinder 117-inch wheelbase car—

much bigger than any of the "all three" cars in the same price class—yet it sells for just a FEW dollars more. ☐The Nash Ambassador Six is as big as cars costing even \$200 more. The Nash Ambassador Eight is a great big 125-inch wheelbase car—compares in size with cars priced much higher. Ask about low rates available through Nash C.I.T. Budget Plan.

NASH MOTORS

Division of Nash-Kelvinator Corp., Kenosha, Wis.

HEAR GRACE MOORE! New radio program starring lovely Grace Moore with Vincent Lopez and his Orchestra, Chorus, Soloists. C.B.S. stations coast to coast every Saturday, 9 P.M. EDST. Don't fail to tune in.

NASH

FOR AS LITTLE AS \$1 OR \$2 A MONTH EXTRA YOU CAN GET OUT OF THE "SMALL CAR" CLASS—A check-up in ten representative cities shows the Nash LaFayette-"400" 4-Door Sedan with trunk DELIVERS for just a FEW dollars more than similarly equipped 4-Door sedans of the "All Three" cars in the same price class. Often, the SLIGHT price difference is just \$1 or \$2 a month extra on your payments.



The Running Board

1858 Twin Lake Drive
Gotha, Florida 34734



1942 Oldsmobile B-44

Coming Up a Little Further Down the Road

- Aug. 7 Florida Region First Sunday Breakfast, Bahia Shrine, 2300 Pembroke Drive,
Between Keller St. & Forrest City Rd., 9:00 AM
- Aug. 8 Florida Region Board Meeting, Kress Memorial Church, Formosa Ave., Winter Park 6:00 PM
- Aug. 8 Florida Region General Meeting, Kress Memorial Church, Formosa Ave., Winter Park 7:00 PM